

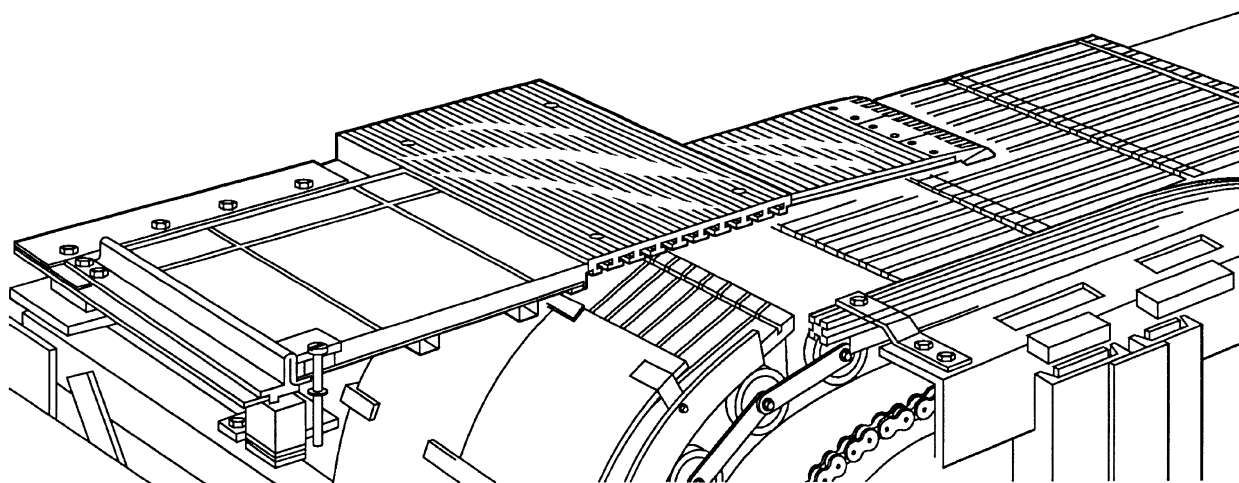
**Comb & Floor Plates**  
**32RB-C & 48RB-C**  
**Escalator & Escal-Aire®**

**Spare Parts Leaflet**

**C-1091**

**April 1, 2001 / Page 1 of 8**

Supersedes SPL C-1091 Dated June 1998



**Floor Plate Assembly (Upper Landing)**  
**O-Forms: 0-1512B, 0-1513, and 0-1513A**

👁️ **SPL C-1082 for typical arrangement drawing and Parts leaflet Index of  
RB-C Escalator and Escal-Aire®**

Unpublished Work—© Otis Elevator Co.; 2001

**OTIS**

**Safety First!**

**SERVICE ENGINEERING**

**Otis Elevator Company**  
**Bloomfield, Connecticut USA**

<b>History</b>
<b>C-1091</b>
<b>First Published: September 1972</b>

<b>Comb &amp; Floor Plates</b>
<b>32RB-C &amp; 48RB-C</b>
<b>Escalator &amp; Escal-Aire®</b>

REVISED DATE	RESPONSIBLE ENGINEER	PRIMARY REASON FOR REVISION
September 1972	Engineer	New leaflet
June 1998	Rob Choquette	Update parts, add history page
April 2001	Tom Charney	Update parts, illustrations, and layout

### ***Leaflet Description***

This SPL details the service parts, comb plates, and floor plates for the 32RB-C and 48RB-C escalator and Escal-Aire®. Page 3 has a cross-reference of arrangement drawings for vintages from May 1966–January 1967 and comb plate comparisons for the same time frame.

RELATED LEAFLET NUMBERS	TITLES
C-1082	Index & Arrangement of Type 32RB-C & 48RB-C Escalator & Escal-Aire®

DRAWING REFERENCES
7115BV

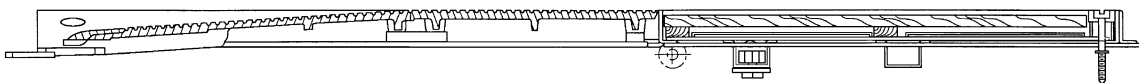
RELATED DOCUMENT NUMBERS	TITLES

This Spare Parts Leaflet (SPL) is prepared to assist you in determining the Lowest Replaceable Units (LRU) supported by the Otis Service Center for the standard version of the product titled on the preceding page. The parts are chosen by Otis associates from: Engineering, Field Engineering, Service Engineering, and Manufacturing. We attempt to make part identification as easy as possible. The SPL, however, cannot be all inclusive. Elevator and escalator contracts classified as either “special” or “custom” are not addressed. Alternative sources of information such as: the Contract Folder, Technical Information Publications, Field Education Articles, Construction Letters, etc. may give the information you are after. You live in the real world of maintaining your elevator and escalator contracts. On a daily basis, situations arise regarding parts identification and at times, for some reason, the part you need is not in the SPL. If you think a standard part not listed should be—let us know. We will respond.

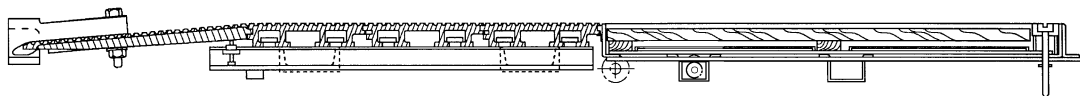
**Tom Charney-Service Engineering**

# Cross-Reference of Vintage Drawings & Comb Plate Arrangements May 1966–January 1967

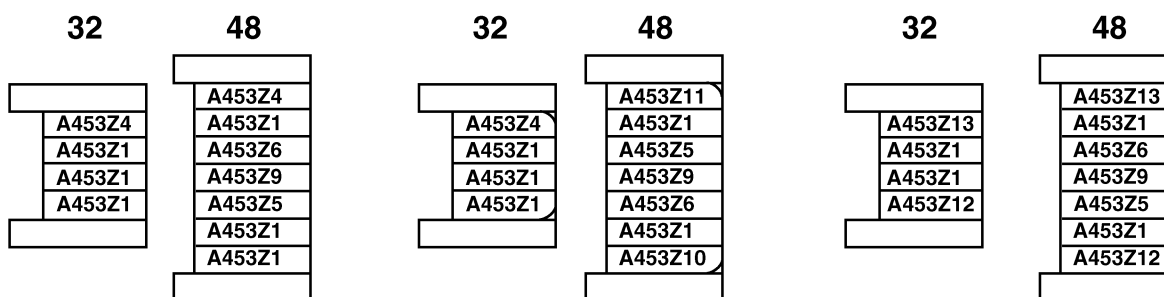
**C-1091**



Typical Floor Plates from May 1966 to January 1967



Typical Floor Plates after January 1967



Escalator  
From May 1966 to Jan. 1967

Escal-Aire®  
From May 1966 to Jan. 1967

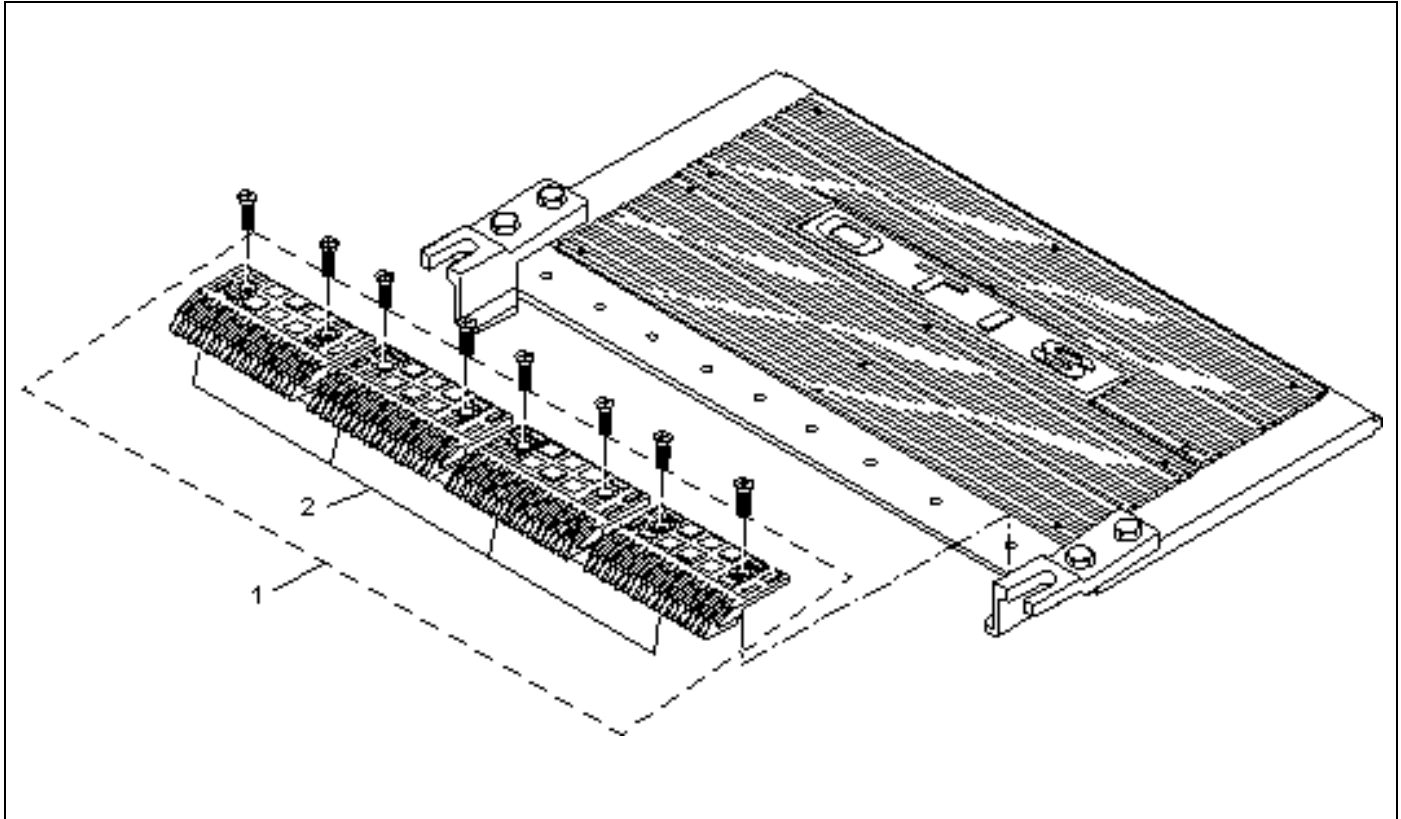
Escalator and Escal-Aire®  
After January 1967

## Comb Plate Arrangements for 32RB-C & 48RB-C Escalators & Escal-Aire®

👁 p. 4 for complete comb plate descriptions.

32RB-C		48RB-C		From	Drawing, ML, or Arrangement of:
Escalator	Escal-Aire®	Escalator	Escal-Aire®		
7115BA1	7115BC1	7115BA2	7115BC2	May 66	Comb & Floor Plate, Lower Landing
B7115BA1		B7115BA2		Jan 67	
7115AY1	7115BB1	7115AY2	7115BB2	May 66	Comb, Floor Plate, & Hinged Plate, Guardrail & Fastenings, Upper Landing
B7115BY1		B7115BY2		Jan 67	
A7115BT1		A7115BT2		Jan 67	Comb Plate, Upper & Lower Landing
7115BV1		7115BV2		Jan 67	Floor Plate Arrangements, Upper & Lower Landing
E6814E1		E6814E2		May 66	Hinged Floor Plate Arrangements, w/Access Door, Upper Landing
F6814E1		F6814E2		Jan 67	
---		---		---	Type 6814BD. Trap (Access) Door Spring Balance Arrangement, w/Fastenings 2202A31 👁 p. 8

**Comb Plates**

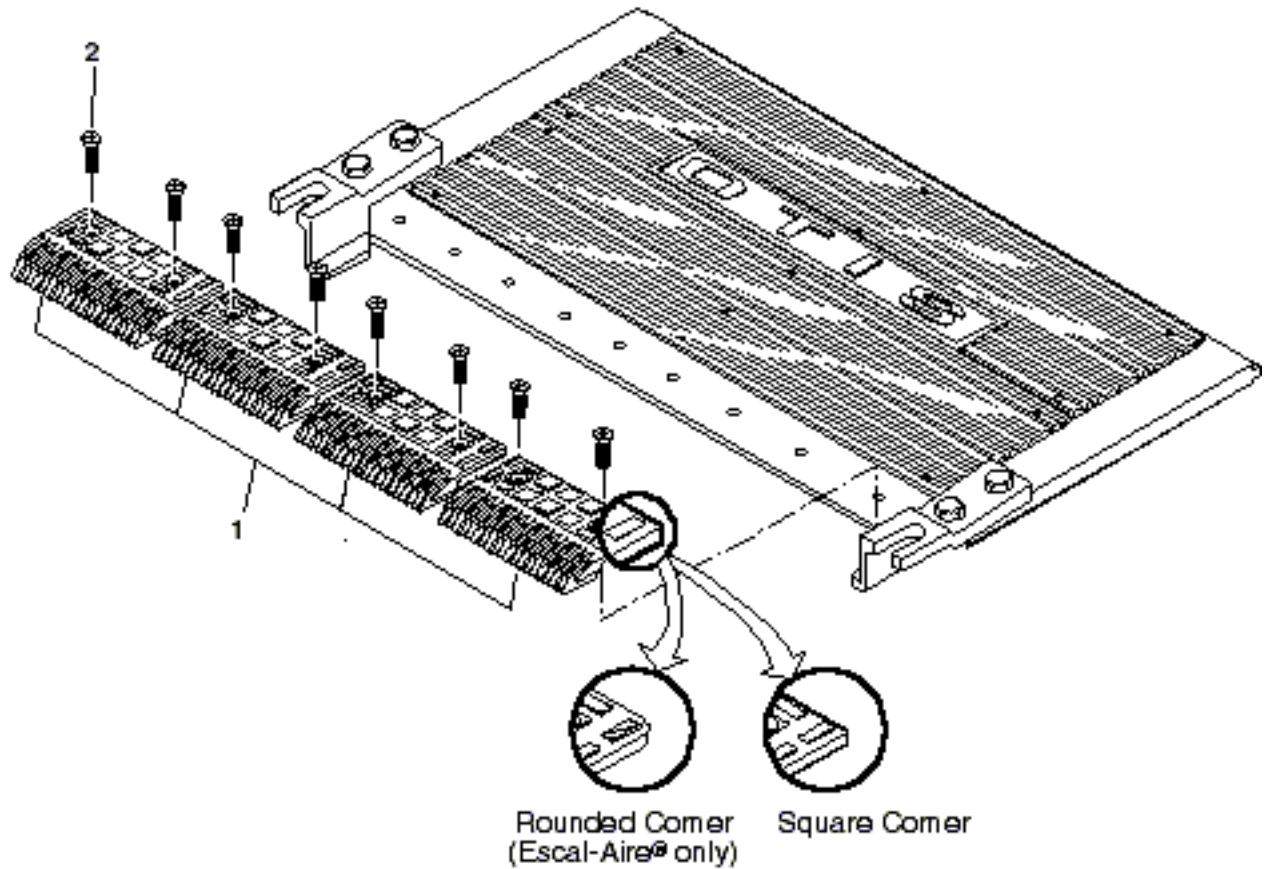


REF. NO.	May 66–Jan 67	After Jan 67	DESCRIPTION
	PART or ML		
1	---	A7115BT1	Plates, Comb, Set, Includes Hardware (screws?), Upper or Lower Landing, 32RB-C
	---	A7115BT2	Plates, Comb, Set, Includes Hardware (screws), Upper or Lower Landing, 48RB-C
2	453Z1 A453Z1		Plate, Comb, Lexan, 6 in. L, Black
	A453Z1-YELLOW		Plate, Comb, Lexan, 6 in. L, Yellow
	453Z4 A453Z4	---	Plate, Comb, Lexan, 5-3/4 in. L, Black
	A453Z4-YELLOW	---	Plate, Comb, Lexan, 5-3/4 in. L, Yellow
	453Z5 A453Z5		Plate, Comb, Lexan, 5-3/8 in. L, Black
	A453Z5-YELLOW		Plate, Comb, Lexan, 5-3/8 in. L, Yellow
	453Z6 A453Z6		Plate, Comb, Lexan, 5-5/8 in. L, Black
	A453Z6-YELLOW		Plate, Comb, Lexan, 5-5/8 in. L, Yellow
	453Z9 A453Z9		Plate, Comb, Lexan, 5 in. L, Black
	A453Z9-YELLOW		Plate, Comb, Lexan, 5 in. L, Yellow

(Continued on next page)

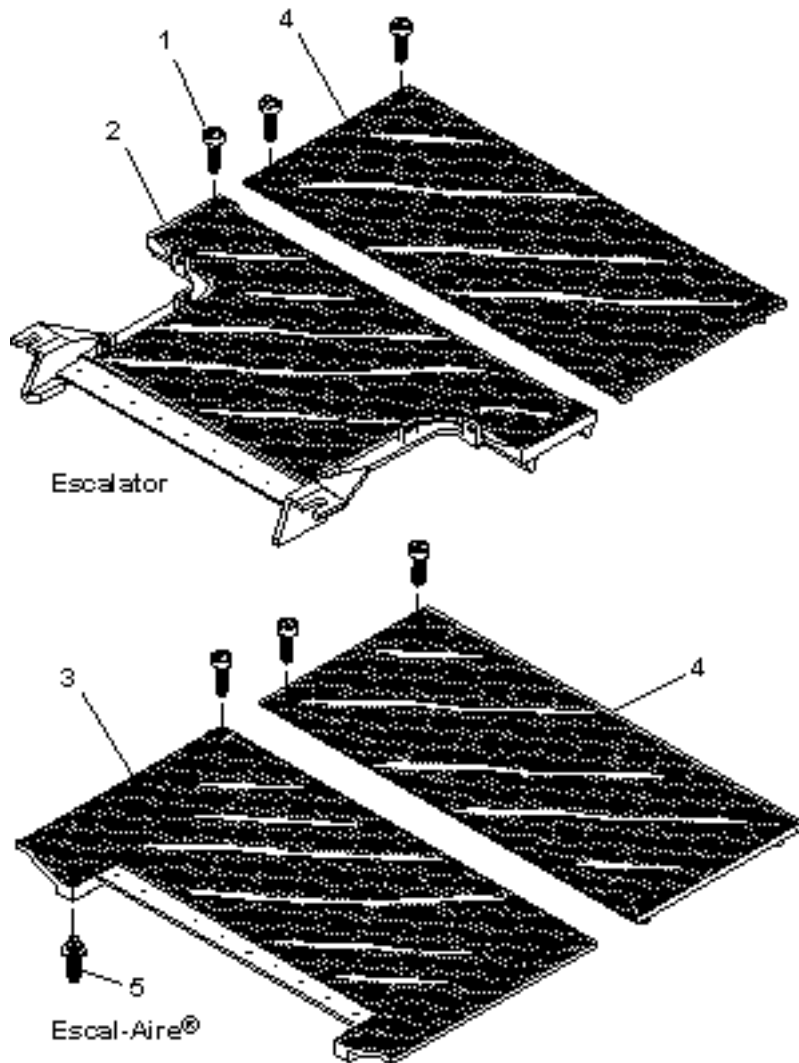
# Comb Plates

**C-1091**



	May 66–Jan 67	After Jan 67	
REF. NO.	PART or ML		DESCRIPTION
1	453Z10 A453Z10	---	Plate, Comb, Lexan, 6 in. L, Rounded Corner, Black
	A453Z10-YELLOW	---	Plate, Comb, Lexan, 6 in. L, Rounded Corner, Yellow
	453Z11 A45Z11	---	Plate, Comb, Lexan, 5-3/4 in. L, Rounded Corner, Black
	A453Z11-YELLOW	---	Plate, Comb, Lexan, 5-3/4 in. L, Rounded Corner, Yellow
	---	453Z12 A453Z12	Plate, Comb, Lexan, 6-1/8 in. L, Black
	---	A453Z12-YELLOW	Plate, Comb, Lexan, 6-1/8 in. L, Yellow
	---	453Z13 A453Z13	Plate, Comb, Lexan, 5-7/8 in. L, Black
	---	A453Z13-YELLOW	Plate, Comb, Lexan, 5-7/8 in. L, Yellow
2	124AG1		Screw, for Comb Plates

**Floor Plates**

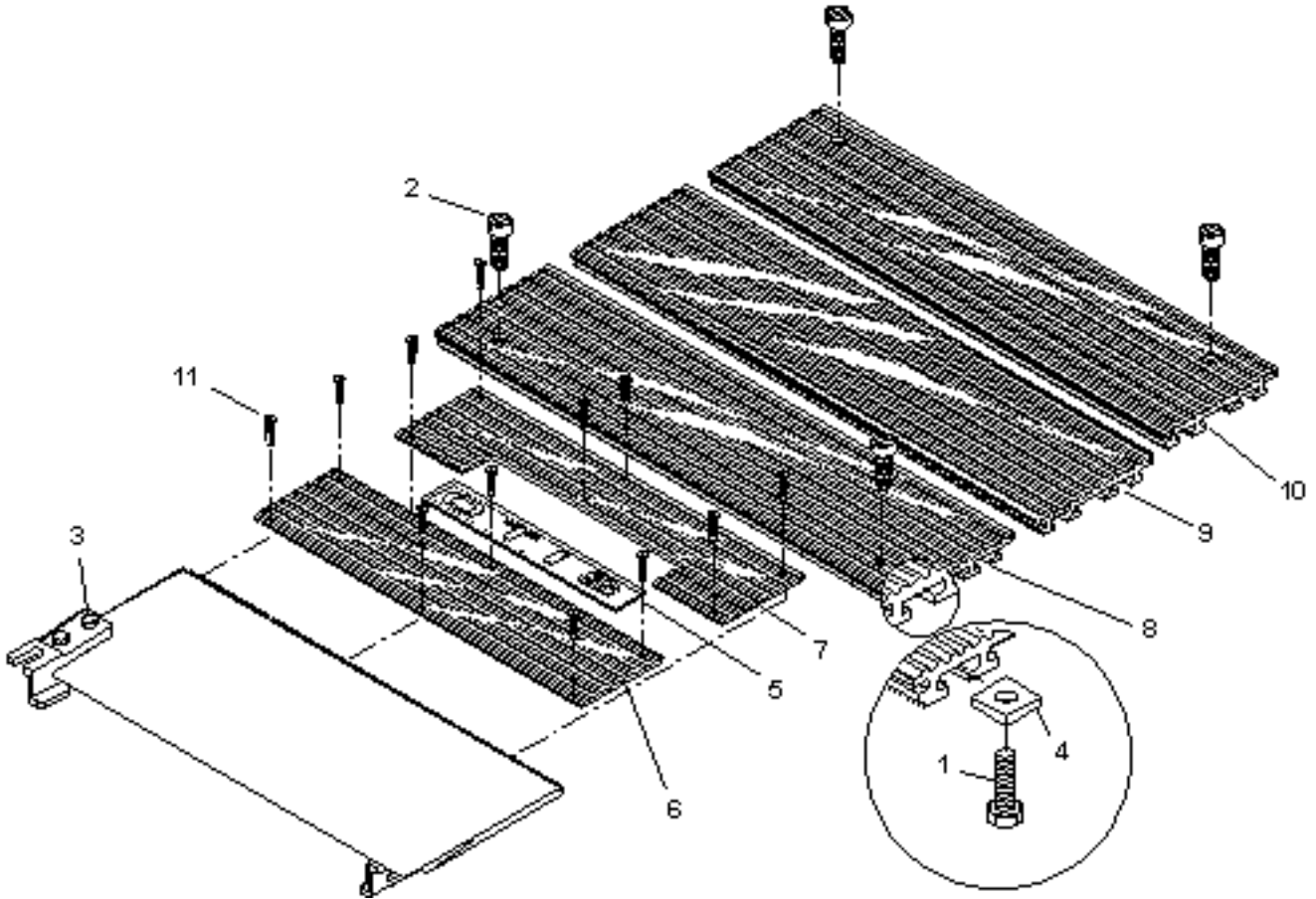


May 1966–Jan 1967

REF. NO.	PART or ML	DESCRIPTION	LANDING
1	65BC1	Bolt, 5/8 in. ⌀, 2-1/4 in. L, Head 7/8 in. ⌀, Slotted	Upper or Lower
2	457AJ2	Plate, Floor, 32RB-C Escalator, w/Screws, for Entry Box	
	457AM2	Plate, Floor, 48RB-C Escalator, w/Screws, for Entry Box	
3	457BM2	Plate, Floor, 32RB-C Escal-Aire®	
	457BL2	Plate, Floor, 48RB-C Escal-Aire®	
4	457AH1	Plate, Floor, 17-1/32 in. W x 37 in. L, 32RB-C Escalator & Escal-Aire®	
	457AL1	Plate, Floor, 17-1/32 in. W x 53 in. L, 48RB-C Escalator & Escal-Aire®	
5	95CH2	Rod, Shouldered, 32 RB-C Escal-Aire®	
	95CH1	Rod, Shouldered, 48RB-C Escal-Aire®	

# Floor Plates

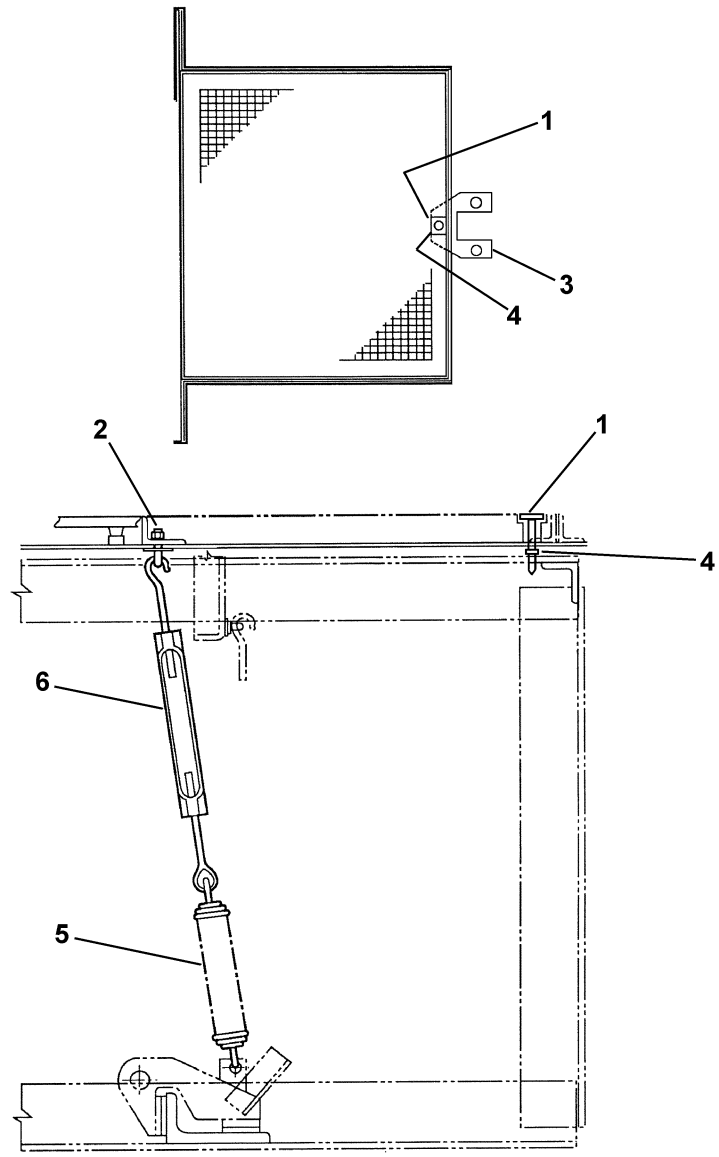
**C-1091**



REF. NO.	PART or ML	DESCRIPTION	LANDING
	<b>May 1966– Jan 1967</b>		
1	58AX198	Bolt, Fin., Hex, 3/8 in. ⌀, 7/8 in. L	Upper or Lower
2	65DP1	Bolt, 3/8 in. ⌀ 2-3/16 in. L, Head 19/32 in. ⌀, Slotted	
3	83A27	Bolt, Hex, 1/2 in. ⌀, 2-3/4 in. L	
4	72EB1	Nut, Steel, 3/8-16 UNC	
5	102FM1	Plate, Data (Name)	
6	457BP1	Plate, Floor, 32RB-C, 24 in. x 6 in.	
	457BP3	Plate, Floor, 48RB-C, 40 in. x 6 in.	
7	457BP2	Plate, Floor, 32RB-C, 24 in. x 6 in., w/Cutout	
	457BP4	Plate, Floor, 48RB-C, 40 in. x 6 in., w/Cutout	
8	457BR2	Plate, Floor, 32RB-C, ⌀ Dwg. 7115BV	
	457BR5	Plate, Floor, 48RB-C, ⌀ Dwg. 7115BV	
9	457BR1	Plate, Floor, 32RB-C, w/o Holes, ⌀ Dwg. 7115BV	
	457BR4	Plate, Floor, 48RB-C, w/o Holes, ⌀ Dwg. 7115BV	
10	457BR3	Plate, Floor, 32RB-C, ⌀ Dwg. 7115BV	
	457BR6	Plate, Floor, 48RB-C, ⌀ Dwg. 7115BV	
11	---	Screw, Machine, Pan-Head, Aluminum 10-32 x 3/4 in. L (obtain locally)	

# Spare Parts, Spring Balance for Access Door & Guard Rail Assembly for Hinged Floor Plate

**C-1091**



REF. NO.	W/O VINTAGE PART or ML	DESCRIPTION
1	B59AY2	Bolt, 1/2 in. ⌀, 4-11/16 in. L, Head 1.0 in. ⌀, Slotted
2	57H1	Bolt, Eye
3	B386AJE1	Plate, Bolt
4	172DR2	Ring, Retaining, TRUARC®
5	91W1	Spring, Extension
6	485F1	Turnbuckle