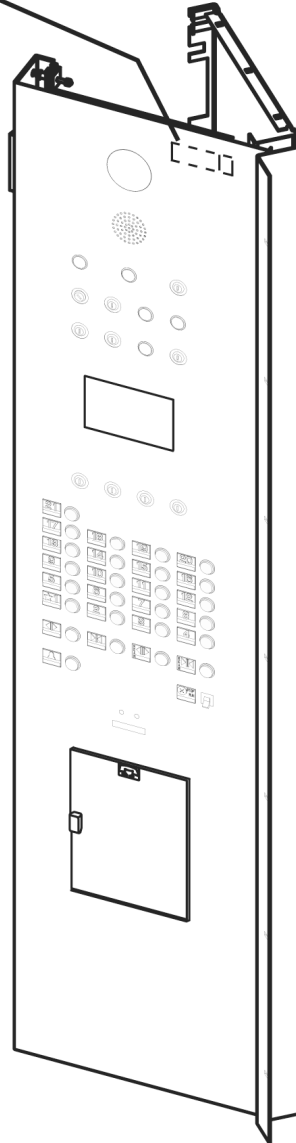


**Series 4—Luxury
Fixture:
Swing Return COP**

**Spare Parts Leaflet
31-AAA25000BM**

December 14, 2011 / Page 1 of 5

31 R - AAA25000BM



OTIS

Safety First!

SERVICE ENGINEERING
Otis Elevator Company
Bloomfield, Connecticut USA

Leaflet Description

This leaflet provides parts used on series 4 car operating panel with the “NEL” micro-motion III pushbuttons.

Leaflet Revisions

Date Revised	Subject Matter Expert	Reason for Revision
September 1997	Steven Karvazy	New SPL
June 25, 2005	Joseph Zych	Removed the non-existent cross-references.
December 14, 2011	Joseph Zych	Added a new p. 5 with swing return assembly part number

Related Drawings

Drawing No.	Title	Drawing No.	Title
AAA2500BM	Series 4, Swing Return, Car Operating Panel	---	---
---	---	---	---

Related Documents

Document ID	Title
SPL 31-AAA250G	Advanced Fixtures: Graphic Inserts
SPL 31-AAA23500T	Fixture–Part: Phone Jack Assembly
SPL 31-AAA23500F	Keyswitch Assemblies: Light Ring & Engraved Collar Version
SPL 31-AAA23500AK	Micro-motion III Pushbuttons
SPL 31-7144F	Service Cabinet

Subject Matter Expert

Name	Department
Joseph Zych	OSC Service Engineering

About Spare Parts Leaflets...

This document lists the lowest replaceable units (LRUs) for the standard version of the product. The LRUs are chosen by a team of Otis associates representing engineering and manufacturing.

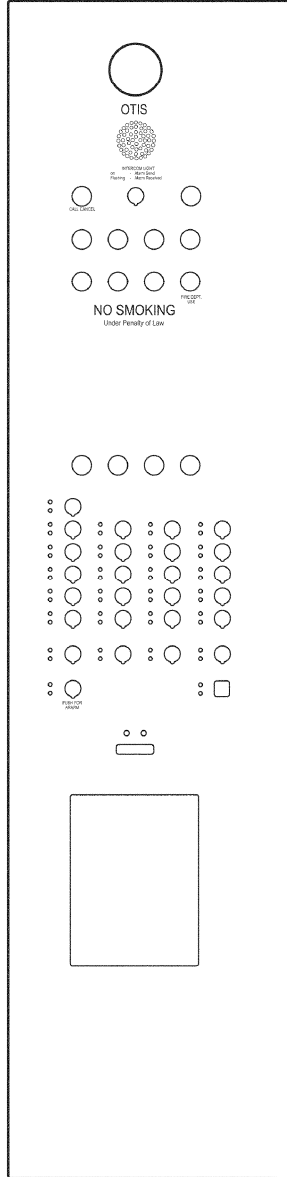
While goal of this document is to make parts identification as easy as possible, the document cannot be all-inclusive. Elevator and escalator contracts classified as “special” or “custom” are not addressed here. For such contracts, please refer to specified information, the contract folder, TIPs, Field Education Articles, Construction Letters, etc. for further information.

If you have any suggestions about this document, please contact the subject matter expert listed on this page.

COP Facing—Front View

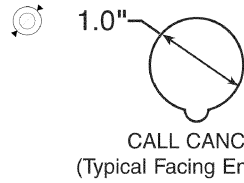
31-AAA2500BM

Typical Finish Facing Cutout Pattern for a Car Operating Panel

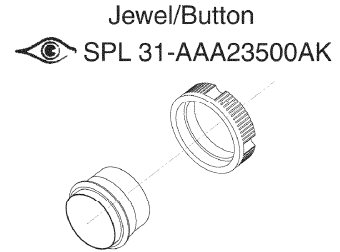


CUTOUT DIMENSION

CORRESPONDING FIXTURE

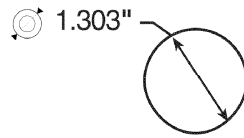


CALL CANCEL
(Typical Facing Engraving)



Jewel/Button

SPL 31-AAA23500AK

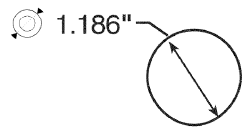


1.303"



Keyswitch w/ Collar

SPL 31-AAA23500F



1.186"

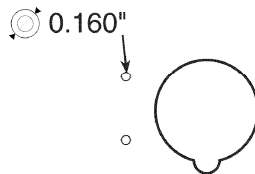


Keyswitch w/o Collar

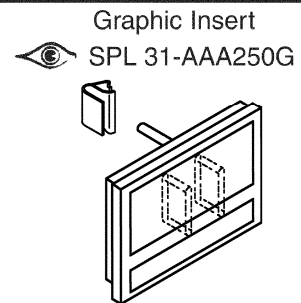
SPL 31-AAA23500F

or
Fireman's Phone Jack

SPL 31-AAA23500T

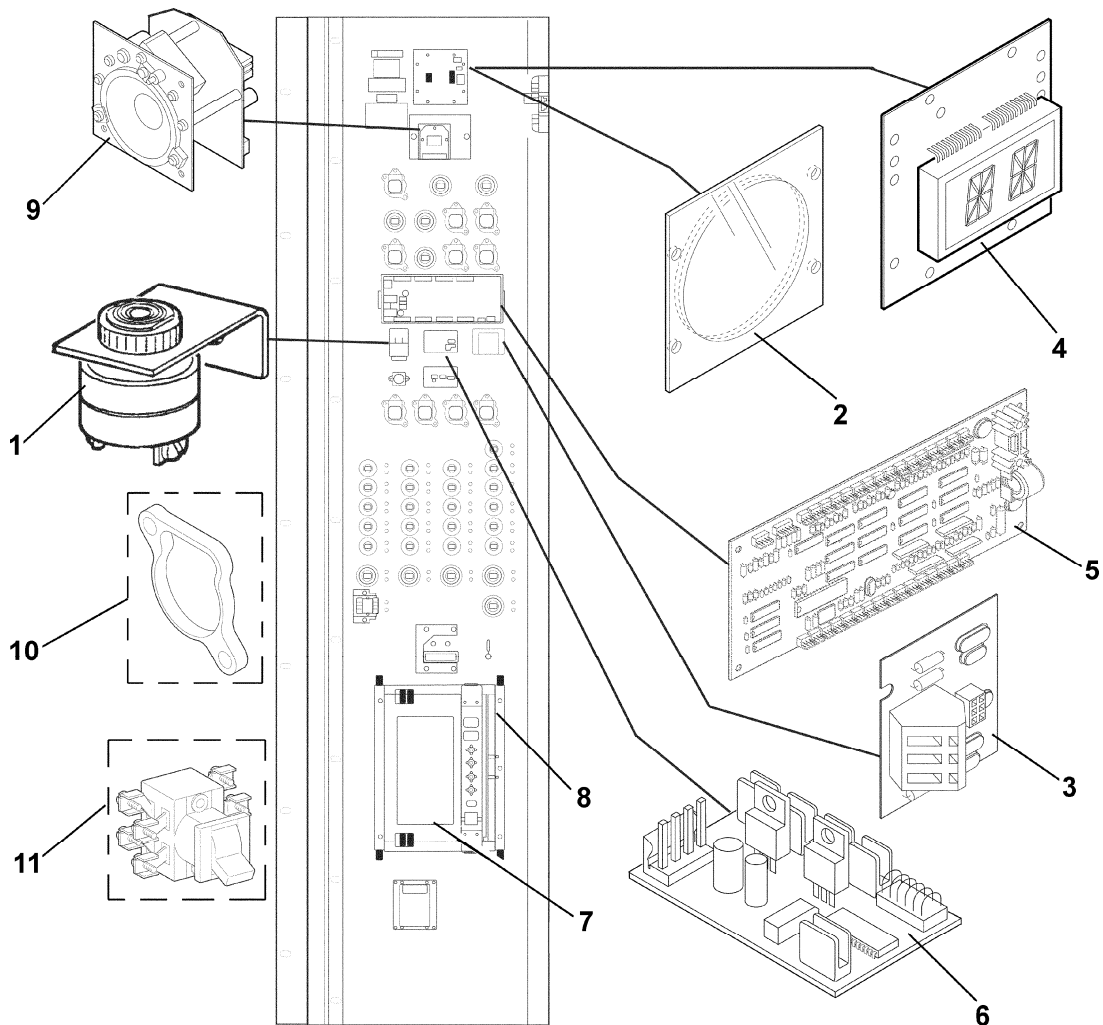


0.160"

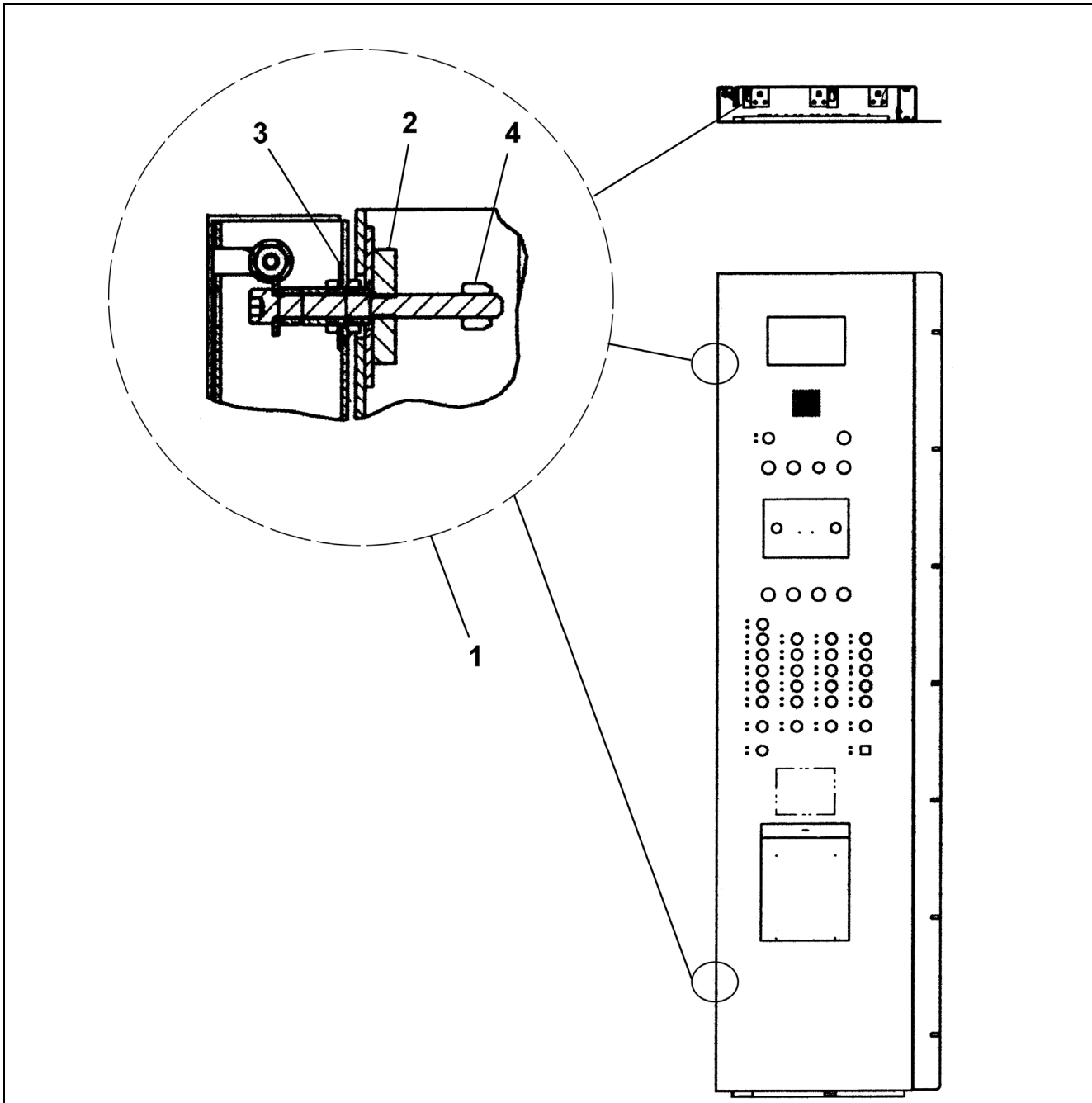


Graphic Insert

SPL 31-AAA2500G



AAA25000BM		
REF. No.	PART No.	DESCRIPTION
1	A6219G2	Device, Audible Signal (floor passing tone)
2	AAA443DK3	Lens, Car Position Indicator
3	AAA26800UX2	PC Board, Line Terminator, 50 Ohm
4	ACA26800HJ1	PC Board, Position Indicator
5	ABA26800TH1	PC Board, Remote-Station Extender
6	GAA25005B4 GAA25005B10	PC Board, Remote-Station 14
7	CAA7145E1	Telephone, Hands-Free (ADA)
8	---	Telephone / Service Cabinet, SPL 31-7144F
9	AAA433PS1	Speaker Assembly, Intercom
10	AAA462JS2	Spacer, Keyswitch (1 per keyswitch), Yellow
11	6073F1	Switch, Emergency Stop, Red



AAA25000BM		
REF. No.	PART No.	DESCRIPTION
1	AAA6193QD-LOCKNUTASSY	Assembly, Swing Return Latching
2	386BNR1	Block
3	130J4	Lockwasher
4	67G25	Stopnut, Elastic