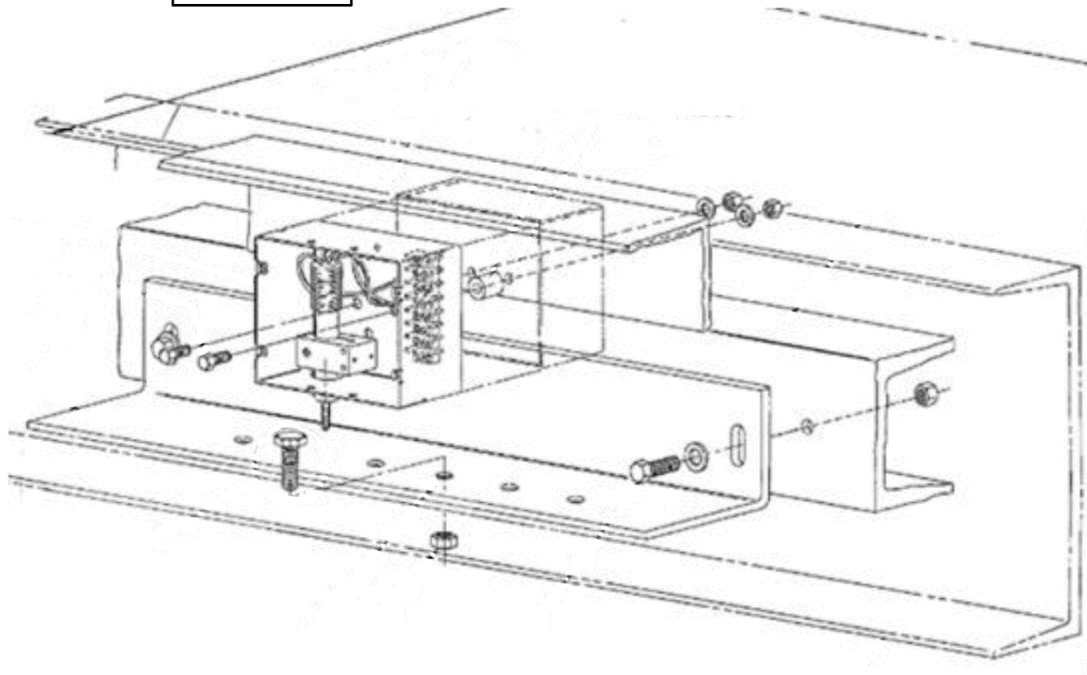


Load Weighing Transducer Assembly

Spare Parts Leaflet
17-7111C

April 26, 2023 / Page 1 of 3

**W/O
VINTAGE**



OTIS

This document does not contain any
technical data subject to EAR or ITAR

SERVICE ENGINEERING
Otis Elevator Company
Bloomfield, Connecticut USA

Unpublished Work—© Otis Elevator Co.; 2023

Leaflet Description

This leaflet provides spare parts information for the load weighing transducer assemblies used as plank channel mounted feedback devices.

Leaflet Revisions

Date Revised	Subject Matter Expert	Reason for Revision
April 26, 2023	Paul Anthony	New Leaflet

Related Drawings

Drawing No.	Title	Drawing No.	Title
7111C	Load Weighing Sensor Arrangement	A7111B	Transducer Box

Related Documents

Document ID	Title
TIP 3.3-6	<i>Elevonic 401M Load Weighing Installation and Adjustment of the 7111C LVDT</i>
TIP 1.1.22.0-2	<i>Elevonic R-Series Adjusting Manual</i>
TIP 1.1.15.0-2	<i>E411M-MS/VF Controller Adjustments Manual</i>
TIP 1.1.15.0-13	<i>E411M-VF Adjustment Manual</i>
TIP 1.1.19.0-3	<i>Adjusting the E411MC Direct Drive Mod Controller</i>
TIP 3.3-8	<i>LWSS AAA26800AWJ Setup and Troubleshooting</i>
TIP 3.3-7	<i>Replacing ABA26800LB with AAA26800AWJ</i>
TIP 22.11-1	<i>Set Up and Adjustment Procedure</i>

Subject Matter Expert

Name	Department
Paul Anthony	OSC Service Engineering

About Spare Parts Leaflets...

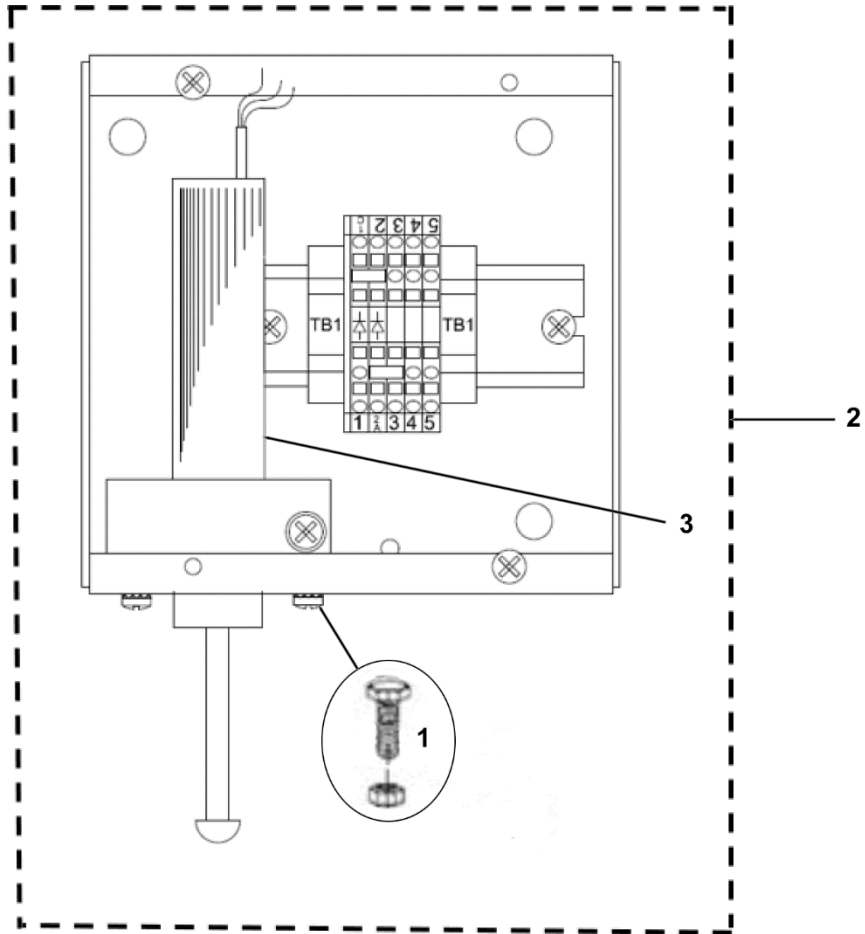
This document lists the lowest replaceable units (LRUs) for the standard version of the product. The LRUs are chosen by a team of Otis associates representing engineering and manufacturing.

While goal of this document is to make parts identification as easy as possible, the document cannot be all-inclusive. Elevator and escalator contracts classified as "special" or "custom" are not addressed here. For such contracts, please refer to specified information, the contract folder, TIPS, Field Education Articles, Construction Letters, etc. for further information.

If you have any suggestions about this document, please contact the subject matter expert listed on this page.

Loadweighing Assembly

17-7111C



W/O VINTAGE		
REF. No.	PART No.	DESCRIPTION
1	59A5	Bolt, 3/8-24, 1-5/16 in. L
2	A7111B1	Box, Transducer
3	622A3	Transducer